

Demographic Change

2008 STATE OF CHATTANOOGA REGION REPORT

Dr. Eileen Robertson-Rehberg
March 2009

the **Ochs Center**
for metropolitan studies

INTRODUCTION

Across seven reports and more than 250 pages of text, data and maps, the 2008 State of Chattanooga Region Report series has sought to detail conditions in the Chattanooga area, Hamilton County and thirty-six subregions in Hamilton County.

In this report, we wanted to provide a demographic overview that speaks to changes in both the size and composition of the population in the Chattanooga region. While some of this data has already appeared in other reports, we thought it would be useful to have a single overview that summarizes basic population trends.

To coincide with this report's publication, we will also be posting data profiles for each of the thirty-six subregions in Hamilton County on the Ochs Center website at www.ochscenter.org. These profiles provide residents and researchers with a one stop shop for information about specific subregions. The subregion profiles are an exclamation point on the notion that there are clear relationships between conditions that cross different areas of concern.

POPULATION IN METROPOLITAN CHATTANOOGA

Chattanooga and Hamilton County are now the growing centers of a growing six county Metropolitan Statistical Area (MSA).

Census Bureau population estimates indicate that the Chattanooga MSA population has increased by 8.0% since the 2000 Census – rising from 476,531 to 514,568 residents.¹ Sequatchie County (17.6%) and Catoosa County (16.8%) had the fastest growth rates within the MSA, while Hamilton County – with a more modest estimated 7.2% increase in population – still accounted for 58.6% of net growth in the region.

Within Hamilton County, Chattanooga's population appears to be growing at a faster rate than the County overall – up by 9.2% since 2000. In fact, population growth in Chattanooga appears to account for more than sixty percent of net population growth in Hamilton County.

Population estimate data are also relatively consistent with housing data from the Bureau of Census on building permits and the U.S. Postal Service data reported in the State of Chattanooga Region Report on Housing.

¹ Census Bureau estimates are just that – estimates. The Census Bureau bases its estimates on a variety of administrative data. The City of Chattanooga's population estimate now reflects a successful challenge to previous estimates.

Table 1. Population Estimates and Housing Unit Growth, Chattanooga MSA

	2000 Census	2007 Census Bureau Estimate	Net Increase	Rate of Increase	Estimated Housing Unit Increase
Hamilton County	307,896	330,168	22,272	7.2%	9.0%
Walker County	61,053	64,554	3,501	5.7%	9.8%
Catoosa County	53,282	62,241	8,959	16.8%	16.8%
Marion County	27,776	28,138	362	1.3%	9.5%
Dade County	15,154	16,098	944	6.2%	5.4%
Sequatchie County	11,370	13,369	1,999	17.6%	25.2%
Metro Area	476,531	514,568	38,037	8.0%	10.3%

Sources: Census 2000; 2007 Census Bureau Population Estimate; Census building permits 2000-2007; United States Postal Service (USPS) administrative data 2008; Sequatchie County 911

There are only limited data on the composition of the metropolitan area's population by race. While American Community Survey (ACS) data is available for Hamilton County, it is not available for the other five counties within the MSA.

Changes in school enrollment data and Equal Employment Opportunity Commission labor force data, however, suggest some changes in the population as a whole.

Between the 2000-2001 and 2007-2008 school years, public school enrollment in the region remained relatively unchanged. The number of white children attending public school in the region declined by 2.1% -- with declines in both Hamilton and Dade counties and increases in the other four counties. African American student enrollment declined by 1.9% -- with declines in Hamilton, Walker and Marion counties and a doubling of the African American student population in Catoosa County.

Table 2. Public School Enrollment Change, Chattanooga MSA

<i>2000-2001 Enrollment</i>	African			<i>2007-2008 Enrollment</i>	African		
	White	American	Latino		White	American	Latino
Hamilton County	26,519	13,817	541	Hamilton County	24,370	13,529	1,854
Walker County	7,986	521	87	Walker County	8,127	452	181
Chickamauga City	1,246	0	0	Chickamauga City	1,308	0	0
Catoosa County	9,101	95	95	Catoosa County	9,631	209	209
Marion County	3,908	205	25	Marion County	3,927	169	48
Dade County	2,492	0	0	Dade County	2,371	0	24
Sequatchie County	1,815	0	10	Sequatchie County	2,164	5	67
Metro Area	53,067	14,638	758	Metro Area	51,898	14,364	2,383

Sources: National Center for Education Statistics 2000-2001 student demographics; Georgia Department of Education Report Card 2007-2008; Tennessee Department of Education Report Card 2007-2008

The most dramatic change, however, was among Latino students. Across the MSA, the number of Latino students enrolled in public schools increased from 758 to 2,383. The number of Latino students doubled in Walker and Catoosa counties and more than tripled in Hamilton County.

Labor force data from the Equal Employment Opportunity Commission is consistent with school enrollment data. Between 2000 and 2006, EEOC tracked employment increased in the MSA by 11.2%. The number of employed whites in the region increased by 8.6% and the number of employed African Americans increased by 10.8%.

The number of Latinos employed in the Chattanooga MSA nearly doubled between 2000 and 2006 – increasing by 89.8%.

Table 3. Chattanooga MSA: Employment by Race and Ethnicity (2000 – 2006)

	2000	2006	% Change 2000-2006
White	66,341	72,027	8.6%
Black or African American	13,049	14,460	10.8%
Latino	2,126	4,035	89.8%
Total	82,553	91,824	11.2%

Source: Equal Employment Opportunity Commission Aggregate Reports 2000 & 2006

POPULATION IN HAMILTON COUNTY

More detailed information available for Hamilton County helps to explain some of these demographic shifts identified at the MSA level.

Several factors appear to be driving population increase in Hamilton County.

First, some population increase is attributed to an increase in net births over deaths since 2000. Between 2000 and 2006, there have been 5,363 more births in Hamilton County than deaths – approximately 24.1% of the net estimated increase in County population.

Table 4. Hamilton County: Total Births and Deaths (2000-2006)

Year	Births	Deaths	Net Births over Deaths
2000	4,034	3,206	828
2001	3,937	3,178	759
2002	3,811	3,202	609
2003	3,865	3,166	699
2004	3,898	3,217	681
2005	3,902	3,220	682
2006	4,202	3,097	1,105
Total	27,649	22,286	5,363

Source: Tennessee Department of Health

Second, Hamilton County’s elderly population seems to be growing. In 2000, there were 42,578 residents 65 years old or older – 13.8% of the County population. Based on data from the 2005-2007 American Community Survey, senior citizens now account for 14.1% of the County population – 46,554 residents or a 9.3% increase.² By comparison, the number of individuals under 18 (74,618) has increased by 4.6% -- or just half the rate of growth for the over 65 population.

² This analysis applies the ACS estimate of share of total population to the 2007 Census population estimate for Hamilton County.

Table 5. Hamilton County Demographics

	2000 Census		2007 Estimate	
	Number	Percentage	Number	Percentage
Population under 18	71,316	23.2%	74,618	22.6%
Population 65 and older	42,578	13.8%	46,554	14.1%

Source: United States Census Bureau, Summary File 3

The increase in the County’s elderly population is also reflected in Medicare enrollment for the aged. Since 2004, Medicare enrollment in the County for hospital insurance and/or supplemental medical insurance has increased from 39,739 to 44,168 – an increase of 11.1%

Table 6. Hamilton County: Medicare Enrollment for Individuals 65 years and older

Year	HI (Hosp Ins)	SMI (Supp Med Ins)	HI and/or SMI
2004	39,668	38,402	39,739
2005	41,878	40,497	41,991
2006	43,036	41,490	43,197
2007	44,009	42,144	44,168

Source: United States Department of Health and Human Services: Centers for Medicaid and Medicare Services

Third, the growth of the Latino community in the County has also contributed to overall population growth. ACS estimates and Census 2000 suggest an increase in the number of Latinos in the County from 5,329 in 2000 to 8,743 in 2007 – an increase of 3,414 residents.

Table 7. Hamilton County Demographics

	2000 Census	Census Estimate and ACS	Change	
			Frequency	Percent
Total Population	307,896	330,168	22,272	7.2%
White	232,792	249,937	17,145	7.4%
African American	61,586	66,694	5,108	8.3%
Hispanic/Latino Population	5,329	8,915	3,586	67.3%
Other	8,189	9,465	1,276	15.6%

Source: United States Census Bureau, Summary File 3; American Community Survey 2005-2007

Between 2001 and 2006, the percentage of births to Latina mothers in Hamilton County increased from 6.1% to 10.2%. During that six year period, a total of 1,778 Latino children were born in Hamilton County.

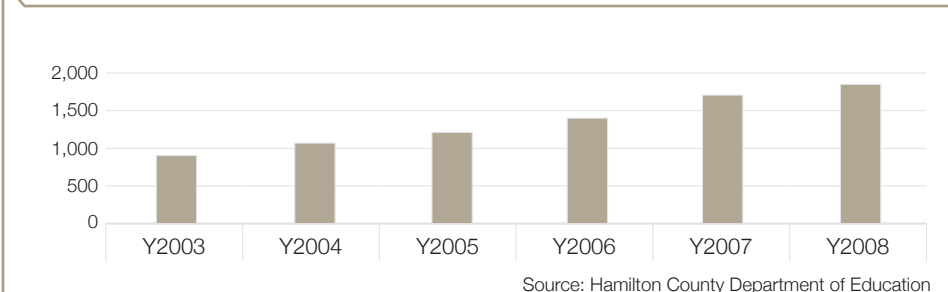
Table 8. Births by Race, 2001-2006

Year	Total births	Black	Hispanic/ Latino	White
2001	3,937	25.9%	6.1%	65.2%
2002	3,811	26.6%	5.7%	65.7%
2003	3,865	24.5%	6.8%	66.5%
2004	3,898	n/a	7.1%	n/a
2005	3,902	25.4%	9.0%	63.4%
2006	4,202	25.9%	10.2%	61.4%

Source: Tennessee Department of Health, birth data 2001-2006

Birth data and the school enrollment data suggest the relative youth of Hamilton County’s Latino population. ACS data indicate that while 28.9% of the County’s white population and 39.9% of the African American population are 25 years old or younger, a majority of the Latino population – 51.8% - are 25 years old or younger. Latino public school enrollment more than doubled over a five-year period of time in Hamilton County as total enrollment decreased. Between 2003 and 2008 the Latino public school population increased from 2.1% of total enrollment to 4.7%.

HCDE Latino Student Population



CHATTANOOGA'S TURNAROUND

Today, based on Census estimates, more people live in Chattanooga, Tennessee than ever. It is important to put Chattanooga's apparent population growth in context.

Between 1980 and 1990, the City of Chattanooga lost 10.1% of its population – one of just ten United States cities with more than 100,000 residents to lose more than ten percent of its population in the 1980s. During the 1960s, Chattanooga also lost more than ten percent of its population and, but for significant annexation, it would have likely lost more than ten percent of its population in the 1970s as well: the 1970s were actually the worst decade for population decline in U.S. cities, with thirty two cities of 100,000 or more residents losing ten percent or more in population.

Chattanooga is unique, however, among American cities in its ability to reverse decades of decline. *Of the ten cities that lost more than ten percent of population in the 1980s, Chattanooga was the only one to increase population in the 1990s and sustain that increase in the current decade.*

Altogether, twenty U.S. cities with population over 100,000 have either lost ten percent of their population in the 1980s or 1990s or five percent or more of their residents in the current decade. This list of twenty is really a list of the most endangered American cities. Between each city's peak population year and 2007, these cities have lost more than 4.3 million residents.

Of these twenty cities, fifteen have continued to lose population this decade; four – Hartford, St. Louis, Norfolk and Newark – have seen modest growth; only Chattanooga has seen sufficient growth to actually attain an increase in population since its peak population year.

Table 9. City Population Comparisons by Peak Population Years and 2007 Census Estimates

City	Peak Population Year	Peak Population	2007	Change	Change %
Chattanooga	1970	169,514	169,884	370	0.2%
Hialeah	2000	226,440	212,217	-14,223	-6.3%
Toledo	1970	383,062	295,029	-88,033	-23.0%
Norfolk	1970	307,951	235,747	-72,204	-23.4%
Warren	1970	179,260	134,223	-45,037	-25.1%
Hartford	1950	177,397	124,563	-52,834	-29.8%
Birmingham	1960	340,887	229,800	-111,087	-32.6%
Baltimore	1950	949,708	637,455	-312,253	-32.9%
Newark	1930	442,337	280,135	-162,202	-36.7%
Syracuse	1950	220,583	139,079	-81,504	-36.9%
Rochester	1950	332,488	206,759	-125,729	-37.8%
Dayton	1960	262,332	155,461	-106,871	-40.7%
Flint	1960	196,940	114,662	-82,278	-41.8%
Gary	1960	178,320	96,429	-81,891	-45.9%
Detroit	1950	1,849,568	916,952	-932,616	-50.4%
Cleveland	1950	914,808	438,042	-476,766	-52.1%
Buffalo	1950	580,132	272,632	-307,500	-53.0%
Pittsburgh	1950	676,806	311,218	-365,588	-54.0%
St. Louis	1950	856,796	350,769	-506,027	-59.1%
New Orleans	1960	627,525	239,124	-388,401	-61.9%

Source: United States Census, July 1, 2007 Population Estimates

If current Census estimates are accurate, Chattanooga now has 14,330 more residents today than in 2000. Who are they?

Using 2005 – 2007 American Community Survey data for the city – along with the population estimates – it is possible to begin to answer that question.

POPULATION BY RACE AND ETHNICITY

As suggested by data for Hamilton County, there has been continued growth among the Latino population since 2000. ACS data suggest that Chattanooga's Latino population has grown by 45%.³ The City's African American population appears to have increased by 9.3% and the City's white population is up by 9.9%.⁴ The increase in the white population is particularly significant – both because it accounts for a majority of the actual increase in population and because it marks the first time since 1980 that the number of white residents in the city is growing. By comparison, between 1980 and 2000 the number of white residents in Chattanooga declined by 19.1%.

3 In fact, population growth in the Latino community may be higher. The methodology for the ACS relies solely on mail surveys with no door-to-door follow up. The result may be an underreporting.

4 Population by race was calculated from July 1, 2007 Census Bureau Population Estimates, estimated total for Chattanooga, and ACS 2005-2007 percentages based on sample data. The calculated city percentages considered race only. Latinos can self report as either white, African American or no race; therefore Latinos reporting race as either white or African American were included. Also, these categories do not include multi-racial individuals or Asian Americans.

Table 10. Chattanooga Population Growth by Race and Ethnicity*

	Census 2000	Population estimates adjusted for 2007**	Change	
			Number	Percent
White	92,874	102,100	9,226	9.9%
African American	56,086	61,328	5,242	9.3%
Latino	3,281	4,757	1,476	45.0%

Source: United States Census Bureau, Summary File 1

*White and African American are classifications of race and Latino is an ethnic class. Latinos can report a racial class as well as Latino ethnicity. In this table race (White and African American) includes Latinos.

**Race and ethnicity population estimates (July 1, 2007) were adjusted by percentages calculated from the 2005-2007 ACS sample.

POPULATION BY AGE

It is also possible to assess growth rates based on resident age. ACS data are consistent with birth data and school enrollment data. There is a very modest increase in the number of Chattanooga residents under 18 years old, but a much higher rate of growth for young children – those five years old or younger. The increase in young children may be fueled, at least in part, by the significant growth in Latino births. The number of senior citizens in Chattanooga has also increased by 8.3%. Altogether though, the rate of increase in population for both children and senior citizens was lower than the overall rate of population growth.

Table 11. Chattanooga Population Growth, Children and Senior Citizens

	2000 Census	2007 Estimate	Change	
			Number	Percent
Under 5	9,449	10,703	1,254	13.3%
Under 18	34,856	36,355	1,499	4.3%
65 and over	23,695	25,652	1,957	8.3%
Total	58,551	62,007	3,456	5.9%

Source: United States Census Bureau, Summary File 1; 2005-2007 American Community Survey; Census Population Estimate

Chattanooga's population growth may be explained by a surge in population among residents between the ages of 45 and 64 years old. Among 18 to 64 year olds, population is up 11.2% -- and by close to 11,000 residents. But virtually all of that growth is in the category of residents between 45 and 64 years old -- where the rate of population increase is nearly 30% in just seven years.

Table 12. Chattanooga Population Growth, 18 to 64 years and 45 to 64 years old

	2000 Census	2007 Estimate	Change	
			Number	Percent
18 to 64 years old	97,003	107,877	10,874	11.2%
45 to 64 years old	35,454	46,039	10,585	29.9%

Source: United States Census Bureau, Summary File 1; 2005-2007 American Community Survey; Census Population Estimate

POPULATION IN HAMILTON COUNTY SUBREGIONS

Detailed population data is not available at the subregion level and will not be available until the 2010 Census. Other indicators, however, can be used to suggest growth or decline and racial and ethnic diversity.

Data from United States Postal Service (USPS) 2008 residential address files and Census 2000 is useful for measuring population change. The Postal Service identifies the total number of residential addresses, vacant addresses and addresses classified as "no status." Vacant addresses are those that the USPS delivery staff have identified as vacant because the mail has not been collected for 90 days or more. No status addresses include a rural route address vacant for 90 days or longer; an address under construction and not yet occupied; an urban address "not likely to be active for some time." Addresses identified as no status can indicate a demolition to be replaced with a new building or an address under construction and not yet occupied.⁵ Census 2000 housing unit totals provide baseline data for change in units over time.

While most of the thirty-six subcounty regions experienced an apparent increase in residential units, the greatest increases were in Ooltewah/Summit (74.1%), Harrison Bay (41.1%) and Hickory Valley/Hamilton Place (38.8%). Relatively high proportions of no status addresses of the units in Harrison Bay (17.5%) and Ooltewah/Summit (16.1%) suggest, however, that at least some of the new construction in these areas has not yet been completed.

Four areas -- South Chattanooga (-2.8%), Bushtown/Highland Park (-1.2%), Brainerd (0.3%) and Red Bank (0.3%) -- experienced a decline or no real change in the number of units since 2000. The subregions which seem to have the highest vacancy rates are Amnicola/East Chattanooga (14.0%), Bushtown/Highland Park (12.1%) and Glenwood/Eastdale (9.8%). By comparison, the lowest vacancy rates appear to be in Ooltewah/Summit (1.1%), Middle Valley (1.1%), Westview/Mountain Shadows (1.3%) and Harrison Bay (1.3%).

Table 13. Subcounty Regions: Total Housing Units (Census 2000) and Total Residential Addresses (USPS 2008)

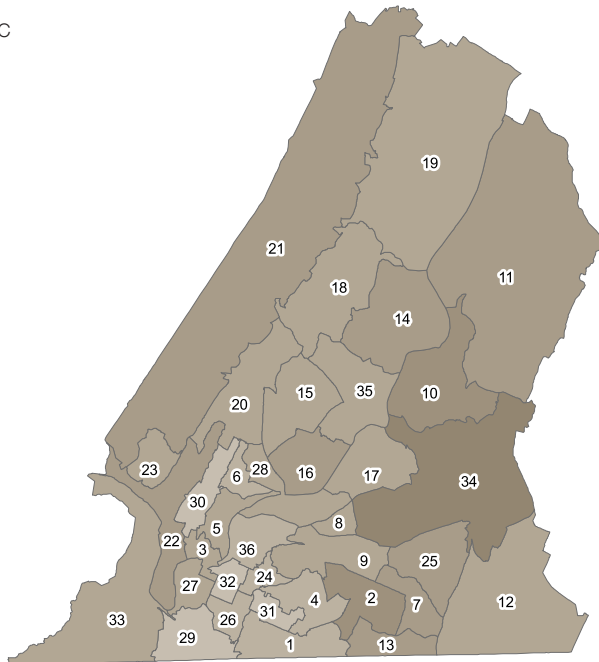
Subcounty region	Total units (Census 2000)	Total residential addresses (USPS 2008)	% Difference between Census 2000 and USPS 2008	No Status (USPS 2008)	Vacant (USPS 2008)
East Ridge	9,876	10,301	4.3%	2.1%	3.0%
Hickory Valley/Hamilton Place	5,145	7,141	38.8%	8.0%	1.8%
North Chattanooga/Hill City/UTC	2,876	3,222	12.0%	3.0%	9.7%
Woodmore/Dalewood	5,446	5,775	6.0%	5.2%	3.9%
Riverview/Stuart Heights	3,346	3,644	8.9%	4.5%	2.6%
Lupton City/Norcross	2,660	2,814	5.8%	0.5%	2.6%
Westview/Mountain Shadows	3,123	3,917	25.4%	5.1%	1.3%
Bonny Oaks/Highway 58	2,535	2,746	8.3%	5.4%	2.1%
Tyner/Greenwood	3,894	4,464	14.6%	5.0%	4.7%
Harrison Bay	2,168	3,060	41.1%	17.5%	1.3%
Birchwood	2,603	3,240	24.5%	10.7%	3.7%
Apison	3,336	3,862	15.8%	23.7%	1.9%
East Brainerd	3,368	4,028	19.6%	4.6%	1.7%
Dallas Bay/Lakesite	4,004	4,945	23.5%	5.8%	2.5%
Hixson	4,889	5,536	13.2%	2.4%	1.5%
Northgate/Big Ridge	2,377	3,092	30.1%	1.7%	1.6%
Harrison	3,104	3,438	10.8%	4.2%	3.1%
Soddy Daisy	3,418	3,870	13.2%	3.7%	2.9%
Bakewell	2,674	3,096	15.8%	7.0%	3.4%
Falling Water/Browntown	3,250	3,650	12.3%	7.5%	3.3%
Walden/Mowbray/Flat Top Mtn	3,092	3,788	22.5%	6.9%	2.9%
Mtn Creek/Moccasin Bend	4,146	5,410	30.5%	6.7%	4.0%
Signal Mtn (Town Area)	2,685	3,048	13.5%	12.0%	2.5%
Glenwood/Eastdale	2,866	2,983	4.1%	3.6%	9.8%
Collegedale	3,669	4,633	26.3%	12.0%	1.5%
Ridgedale/Oak Grove/Clifton Hills	3,862	3,963	2.6%	1.7%	9.6%
Downtown	3,996	4,370	9.4%	11.7%	4.5%
Dupont/Murray Hills	3,732	4,030	8.0%	3.4%	2.2%
South Chattanooga	5,882	5,715	-2.8%	4.0%	9.6%
Red Bank	5,402	5,420	0.3%	1.1%	4.4%
Brainerd	3,795	3,807	0.3%	1.8%	5.0%
Bushtown/Highland Park	3,317	3,276	-1.2%	4.1%	12.1%
Lookout Valley/Lookout Mtn	3,218	3,734	16.0%	7.0%	4.9%
Ooltewah/Summit	4,090	7,122	74.1%	16.1%	1.1%
Middle Valley	3,332	3,778	13.4%	2.1%	1.1%
Amnicola/East Chattanooga	3,516	3,672	4.4%	4.6%	14.0%

Sources: United States Census Bureau, Summary File 1; United States Postal Service (USPS); United States Department of Housing and Urban Development (HUD)

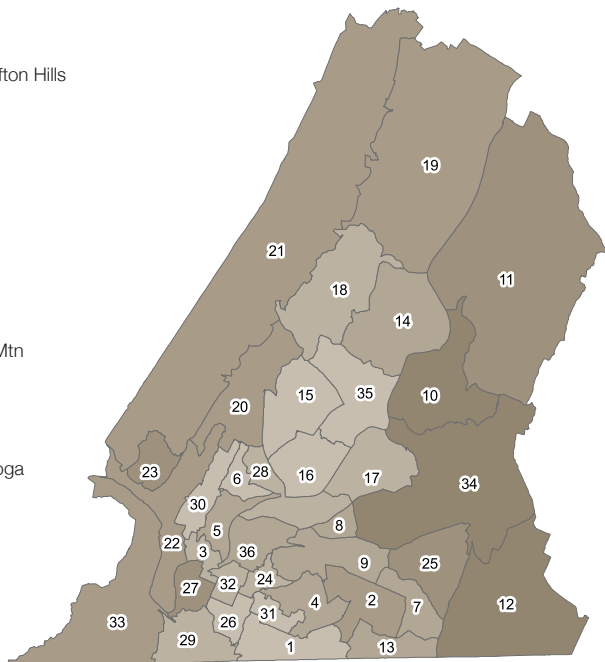
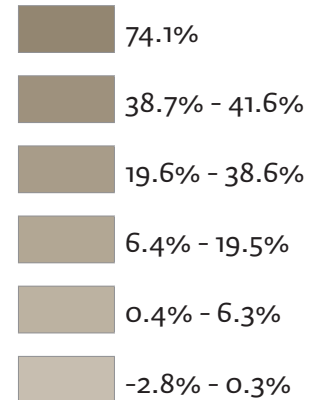
Totals and Characteristics: Census 2000 Housing Unit Totals & 2008 United States Postal Service Residential Addresses

SUBREGION

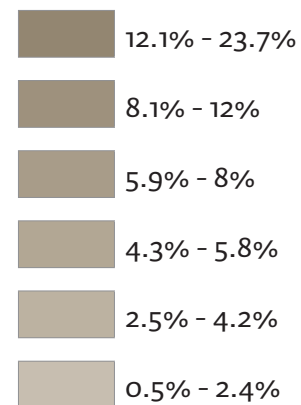
- 1 East Ridge
- 2 Hickory Valley/Hamilton Place
- 3 North Chattanooga/Hill City/UTC
- 4 Woodmore/Dalewood
- 5 Riverview/Stuart Heights
- 6 Lupton City/Norcross
- 7 Westview/Mountain Shadows
- 8 Bonny Oaks/Highway 58
- 9 Tyner/Greenwood
- 10 Harrison Bay
- 11 Birchwood
- 12 Apison
- 13 East Brainerd
- 14 Dallas Bay/Lakesite
- 15 Hixson
- 16 Northgate/Big Ridge
- 17 Harrison
- 18 Soddy Daisy
- 19 Bakewell
- 20 Falling Water/Browntown
- 21 Walden/Mowbray/Flat Top Mtn
- 22 Mtn Creek/Moccasin Bend
- 23 Signal Mtn (Town Area)
- 24 Glenwood/Eastdale
- 25 Collegedale
- 26 Ridgedale/Oak Grove/Clifton Hills
- 27 Downtown
- 28 Dupont/Murray Hills
- 29 South Chattanooga
- 30 Red Bank
- 31 Brainerd
- 32 Bushtown/Highland Park
- 33 Lookout Valley/Lookout Mtn
- 34 Ooltewah/Summit
- 35 Middle Valley
- 36 Amnicola/East Chattanooga



Change in total units, addresses (Census 2000 and USPS 2008)



Addresses with no status (USPS 2008)



The Postal Service identifies the total number of residential addresses, vacant addresses and no-status addresses. Vacant addresses are those that the USPS delivery staff have identified as vacant because the mail has not been collected for 90 days or more. No-status addresses include a rural route address vacant for 90 days or longer; an address under construction and not yet occupied; or an address in an urban area as not likely to be active for some time -- this tends to happen when a building is being demolished and replaced, or there is a new home under construction. (Source: Case Western Reserve University).

There may also be differences in the basis for neighborhood growth. For example, certain subregions may see an increase in households with children while other areas may experience growth from residents who are older (“empty nesters”) or younger individuals or couples that do not yet have school age children.

School enrollment data is a means of detecting subregion level growth among families with school children. As reported in the State of Chattanooga Region Report on Education, seven subregions experienced growth of more than ten percent in public school enrollment between 2005 and 2008: by comparison, two subregions – Downtown (-26.6%) and North Chattanooga/Hill City/UTC (-10%) had declines of enrollment of ten percent or more.

Table 14. Hamilton County Department of Education School Enrollment by Student Residence

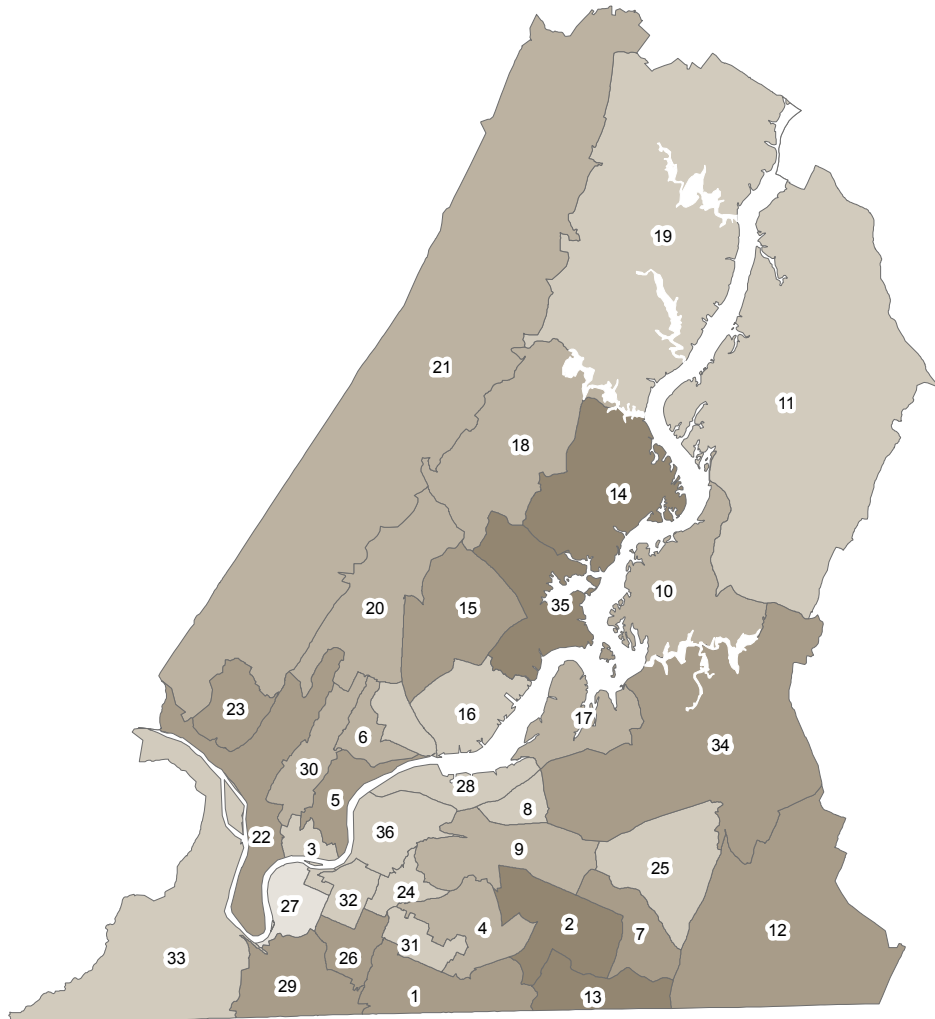
Subcounty region	PreKindergarten to 12th grade		Change 2005 to 2008	
	2005	2008	Number	Percent
East Ridge	2,325	2,486	161	6.9%
Hickory Valley/Hamilton Place	1,149	1,326	177	15.4%
North Chattanooga/Hill City/UT	408	367	-41	-10.0%
Woodmore/Dalewood	1,663	1,706	43	2.6%
Riverview/Stuart Heights	337	375	38	11.3%
Lupton City/Norcross	608	608	0	0.0%
Westview/Mountain Shadows	959	1,040	81	8.4%
Bonny Oaks/Highway 58	58	997	951	-4.6%
Tyner/Greenwood	1,134	1,186	52	4.6%
Harrison Bay	843	881	38	4.5%
Birchwood	975	929	-46	-4.7%
Apison	722	793	71	9.8%
East Brainerd	860	1,017	157	18.3%
Dallas Bay/Lakesite	1,563	1,999	436	27.9%
Hixson	1,441	1,528	87	6.0%
Northgate/Big Ridge	562	549	-13	-2.3%
Harrison	1,052	1,058	6	0.6%
Soddy Daisy	1,190	1,173	-17	-1.4%
Bakewell	982	943	-39	-4.0%
Falling Water/Browntown	756	767	11	1.5%
Walden/Mowbray/Flat Top Mtn	1,251	1,259	8	0.6%
Mtn Creek/Moccasin Bend	664	700	36	5.4%
Signal Mtn (Town Area)	734	809	75	10.2%
Glenwood/Eastdale	1,092	999	-93	-8.5%
Collegedale	1,323	1,288	-35	-2.6%
Ridgedale/Oak Grove/Clifton Hills	1,479	1,596	117	7.9%
Downtown	757	556	-201	-26.6%
Dupont/Murray Hills	977	924	-53	-5.4%
South Chattanooga	1,673	1,822	149	8.9%
Red Bank	1,122	1,131	9	0.8%
Brainerd	885	813	-72	-8.1%
Bushtown/Highland Park	1,122	1,085	-37	-3.3%
Lookout Valley/Lookout Mtn	823	803	-20	-2.4%
Ooltewah/Summit	1,720	1,937	217	12.6%
Middle Valley	1,133	1,351	218	19.2%
Amnicola/East Chattanooga	1,475	1,444	-31	-2.1%
Total	38,756	40,199	1,443	3.7%

Source: Hamilton County Department of Education addresses geocoded by student residence
 Note: Total includes only those students with adequate address information for purposes of geocoding.

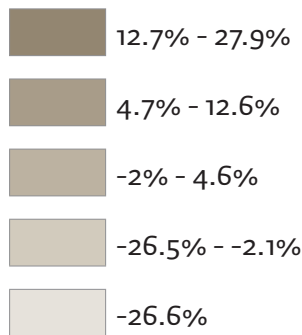
Public School Enrollment Percentage Point Change 2004-2005 to 2007-2008

SUBREGION

- 1 East Ridge
- 2 Hickory Valley/Hamilton Place
- 3 North Chattanooga/Hill City/UTC
- 4 Woodmore/Dalewood
- 5 Riverview/Stuart Heights
- 6 Lupton City/Norcross
- 7 Westview/Mountain Shadows
- 8 Bonny Oaks/Highway 58
- 9 Tyner/Greenwood
- 10 Harrison Bay
- 11 Birchwood
- 12 Apison
- 13 East Brainerd
- 14 Dallas Bay/Lakesite
- 15 Hixson
- 16 Northgate/Big Ridge
- 17 Harrison
- 18 Soddy Daisy
- 19 Bakewell
- 20 Falling Water/Browntown
- 21 Walden/Mowbray/Flat Top Mtn
- 22 Mtn Creek/Moccasin Bend
- 23 Signal Mtn (Town Area)
- 24 Glenwood/Eastdale
- 25 Collegedale
- 26 Ridgedale/Oak Grove/Clifton Hills
- 27 Downtown
- 28 Dupont/Murray Hills
- 29 South Chattanooga
- 30 Red Bank
- 31 Brainerd
- 32 Bushtown/Highland Park
- 33 Lookout Valley/Lookout Mtn
- 34 Ooltewah/Summit
- 35 Middle Valley
- 36 Amnicola/East Chattanooga



Change 2004-2005 to 2007-2008



Universe: HCDE students pre-kindergarten to 12th grade


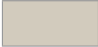

Source: Hamilton County Department of Education

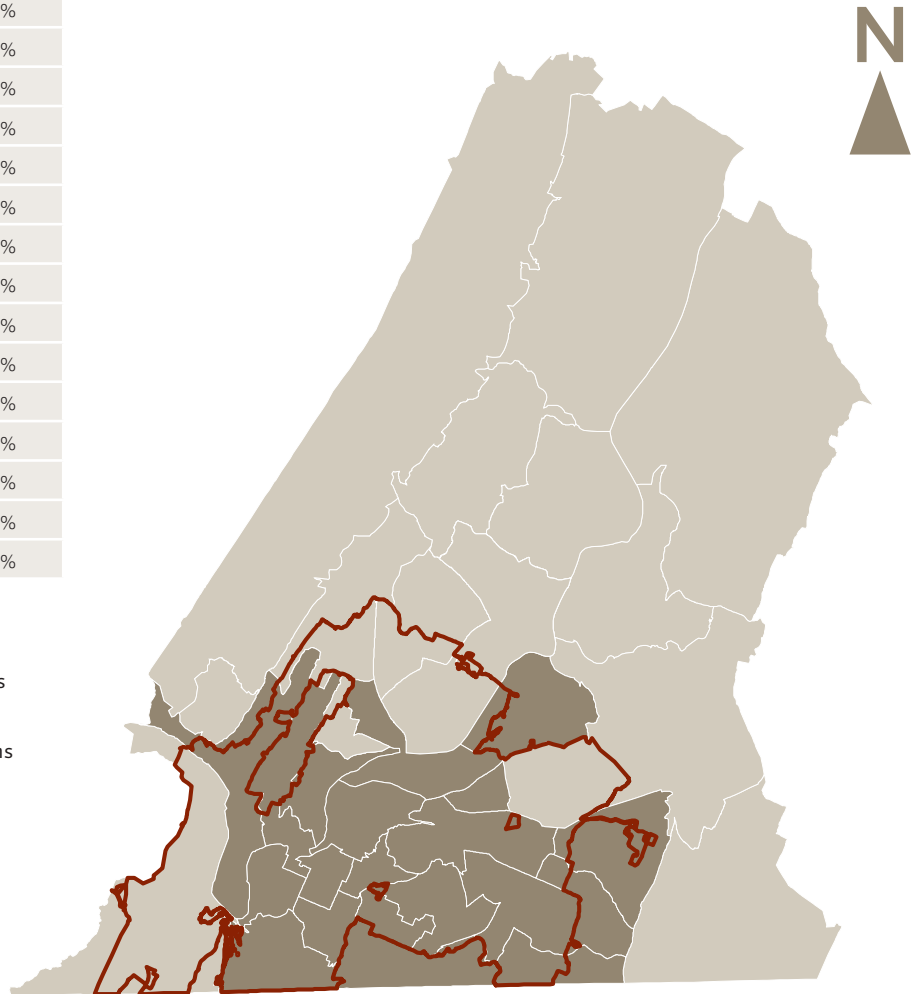
Birth data also provides an insight into the differences in race and ethnicity by subregion. As reported in the State of Chattanooga Region Report on Early Childhood, in fifteen subregions more than 80% of all births between 2001 and 2006 were to white mothers: there were six subregions where more than half of all births were to African American mothers; and three subregions where more than twenty percent of births were to Latino mothers. There are also three subregions where no racial or ethnic group accounted for a majority of births: these subregions also accounted for some of the lowest gaps in percentage of births to African Americans and whites.

Subregions with Highest Percentages of White Births (2001-2006)

Signal Mountain	98.3%
Soddy Daisy	97.7%
Dallas Bay/Lakesite	97.2%
Lookout Valley/Lookout Mountain	96.8%
Birchwood	96.2%
Walden/Mowbray/Flat Top Mountain	95.2%
Harrison Bay	94.7%
Bakewell	94.7%
Middle Valley	94.2%
Falling Water/Browntown	93.1%
Ooltewah/Summit	92.5%
Northgate/Big Ridge	87.9%
Hixson	85.1%
Apison	82.7%
Lupton City/Norcross	81.1%

Source: Tennessee Department of Health

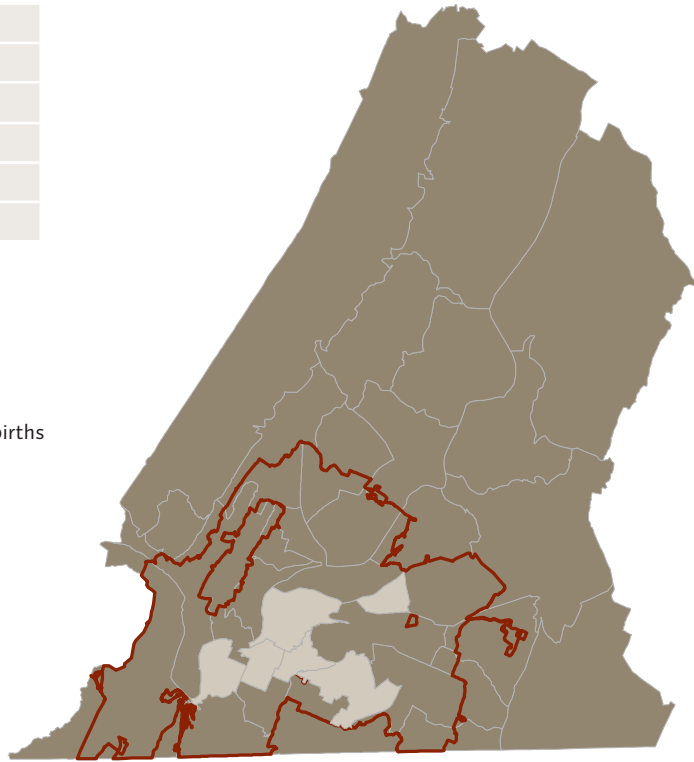
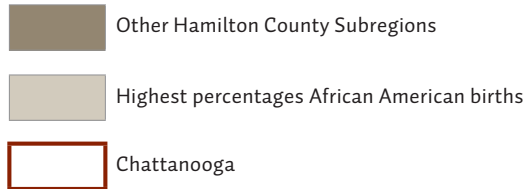
-  Other Hamilton County Subregions
-  Highest percentages of White births
-  Chattanooga



Subregions with Highest Percentages of African American Births (2001-2006)

Glenwood/Eastdale	88.0%
Amnicola/East Chattanooga	82.0%
Downtown	81.0%
Bonny Oaks/Highway 58	66.9%
Bushtown/Highland Park	57.7%
Woodmore/Dalewood	51.4%

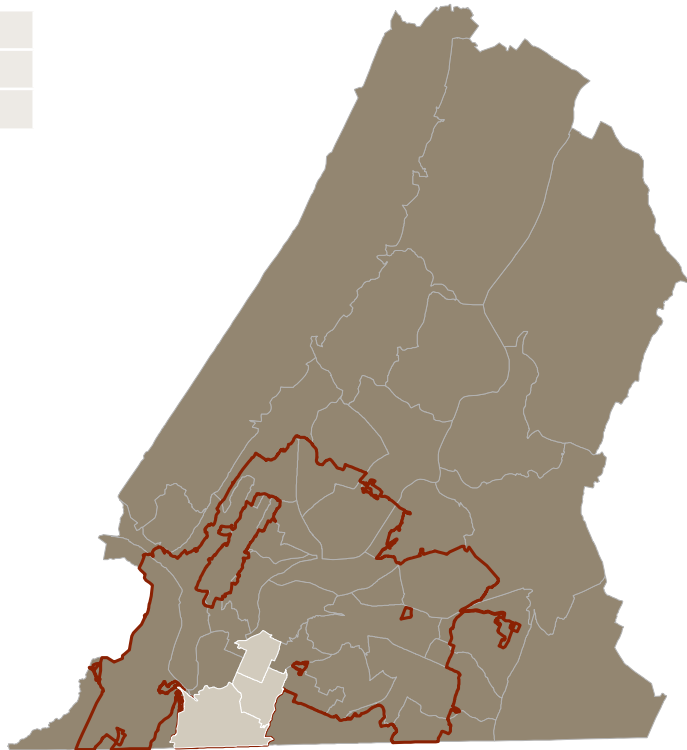
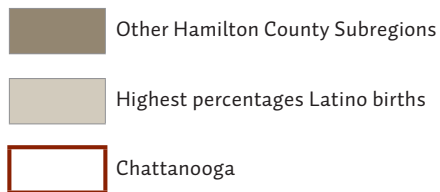
Source: Tennessee Department of Health



Subregions with Highest Percentages of Latino Births (2001-2006)

Ridgedale/Oak Grove/Clifton Hills	38.6%
Bushtown/Highland Park	30.2%
South Chattanooga	20.9%


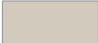

Source: Tennessee Department of Health

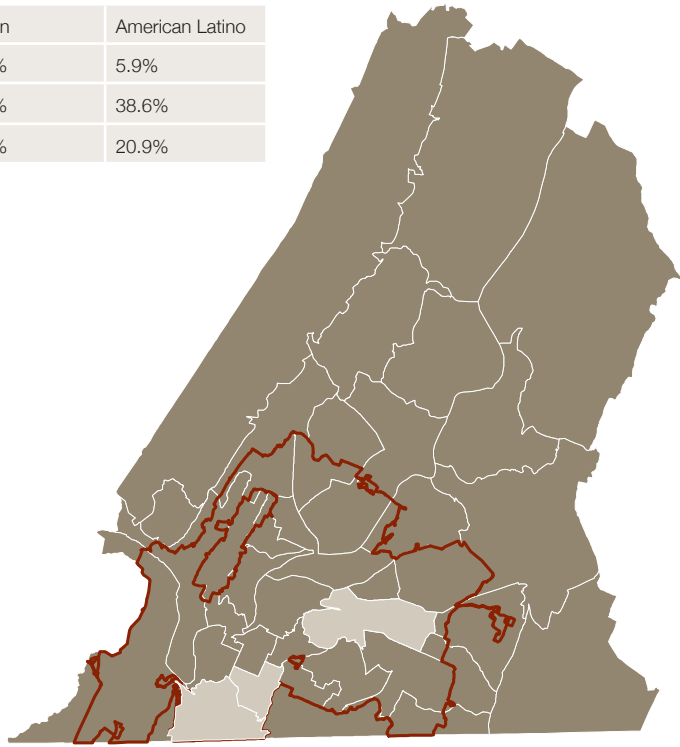


Subregions without Racial/Ethnic Majority in Births (2001-2006)

	White	African	American Latino
Tyner/Greenwood	39.7%	49.4%	5.9%
Ridgedale/Oak Grove/Clifton Hills	15.6%	45.1%	38.6%
South Chattanooga	37.0%	41.2%	20.9%

Source: Tennessee Department of Health birth data 2001-2006


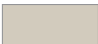

-  Other Hamilton County Subregions
-  Without Racial/Ethnic majority
-  Chattanooga

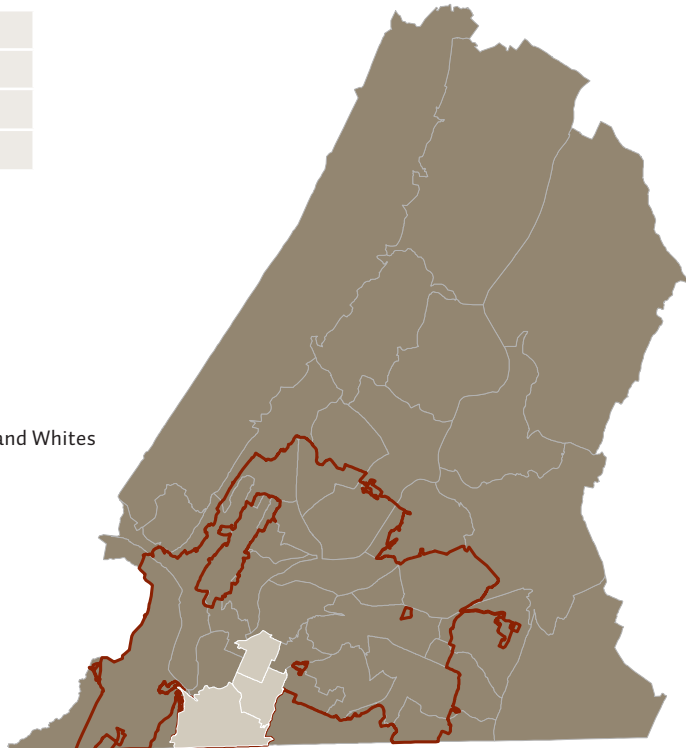


Subregions with Lowest Gap in Percentages of Births to African Americans and Whites

South Chattanooga	4.2%
Tyner/Greenwood	19.7%
Woodmore/Dalewood	20.6%
Brainerd	20.6%

Source: Tennessee Department of Health

-  Other Hamilton County Subregions
-  Lowest gap between African Americans and Whites
-  Chattanooga



The OCHS Center for Metropolitan Studies

P.O. BOX 4029

CHATTANOOGA TN 37405

www.ochscenter.org

ACKNOWLEDGEMENTS:

The 2008 State of Chattanooga
Region Report was made
possible by generous support
from the Lyndhurst Foundation,
the Benwood Foundation, the
Community Foundation of Greater
Chattanooga and the United Way.